

UltraMetal Series

Tin Roof Mounting System

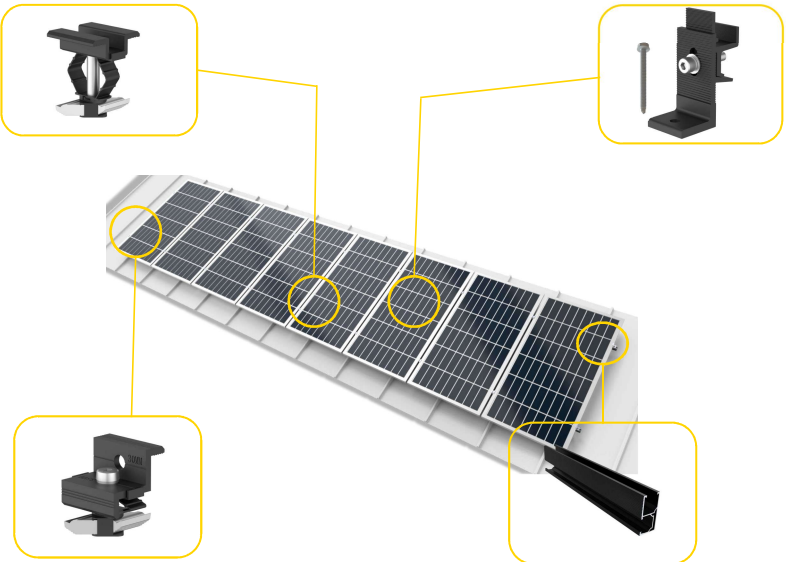
ALTRA-METAL SERIES

Tin Roof Mounting System



/ FEATURE /







- 1 **Quick Install**
Rotary type panel clamps
Click in Tin L feet
- 2 **High Corrosin Resistance**
High quality anodized rails
and anodized accessories
- 3 **Rubust Structures**
AS/NZS 1170 certified
Up to 2.4m length panels



/ SPECIFICATION /

Product Name	ALTRA METAL - TIN ROOF MOUNTING SYSTEM
Roof Type	Pitched Roof
Wind Region	Wind Zone A, B, C, D, and NZ1, NZ2,
PV Module Thickness	30/35mm
Compatible Module Dimension	Up to 2.4m Length Panels
Panel Layout	Landscape, Portrait
Design Standard	AS/NZS 1170:2021
Material	AL6005-T6, SUS304
Warranty	25-year

/ COMPONENT /

- | | | | | | |
|---|---|----------------------------|---|---|---------------------------------|
| 1 |  | Antai Black or Silver Rail | 4 |  | Antai Rail Splice |
| 2 |  | Rotary Mid Clamp 30/35 | 5 |  | Antai Tin L foot |
| 3 |  | Rotary End Clamp 30/35 | 6 |  | Grounding Lug and Earthing Clip |